

Simple Shade Taking Absolute Minimum



Closest shade tab horizontal directly underneath the target tooth not in-front or behind incisal edge but on the same plane. And 1 shot to show the surrounding dentition.



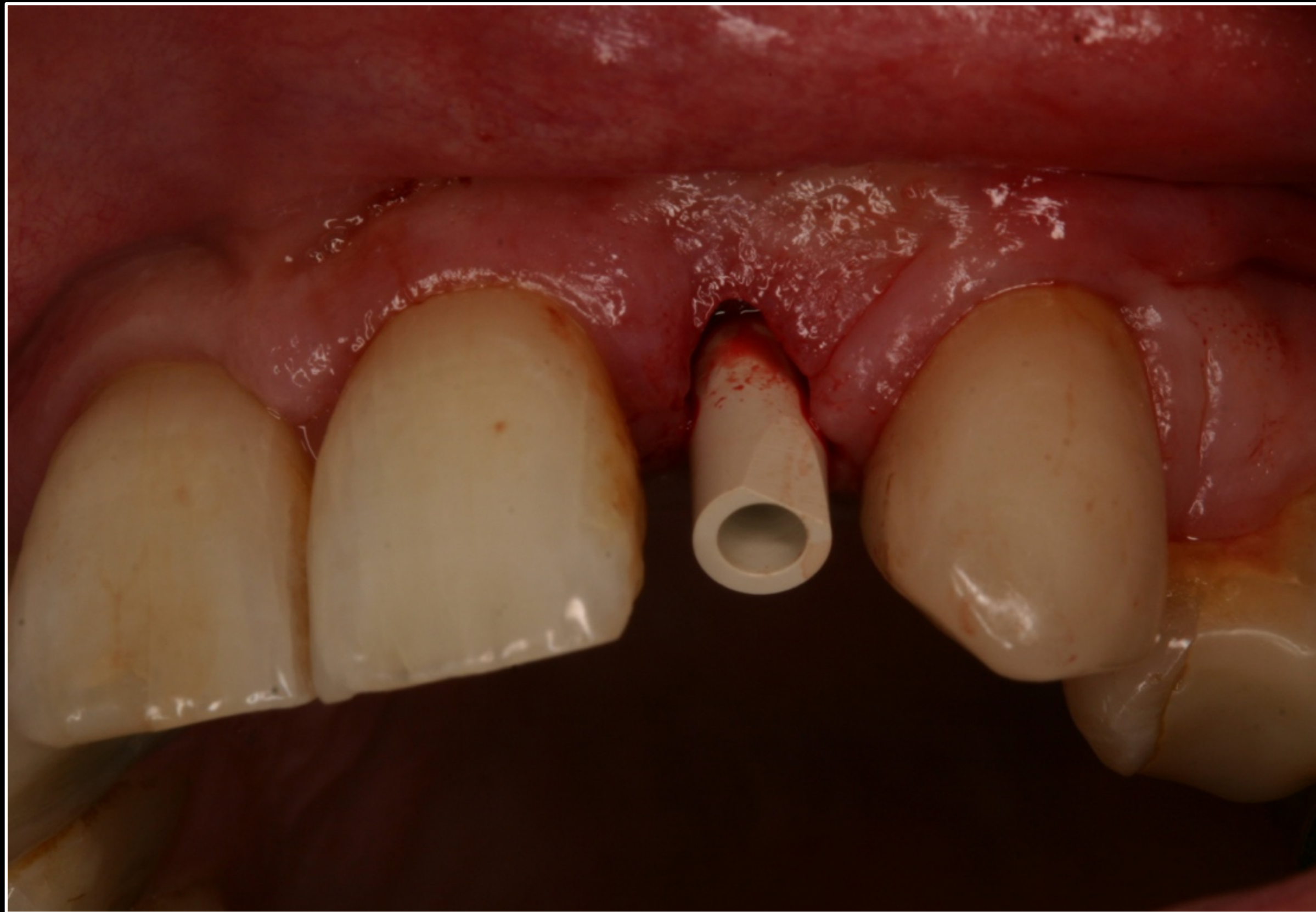
Shade taking

Additional images

**In most cases a
Stump or Prep
shade is also
vital!**



Shade Taking Additional images.



Different angles show different surface texture



**Shade Taking
Additional images.**

**If using a bilateral
flash you can turn
one flash away.**

**This will show up
internal details such
as feature lines and
opalescence effects.**

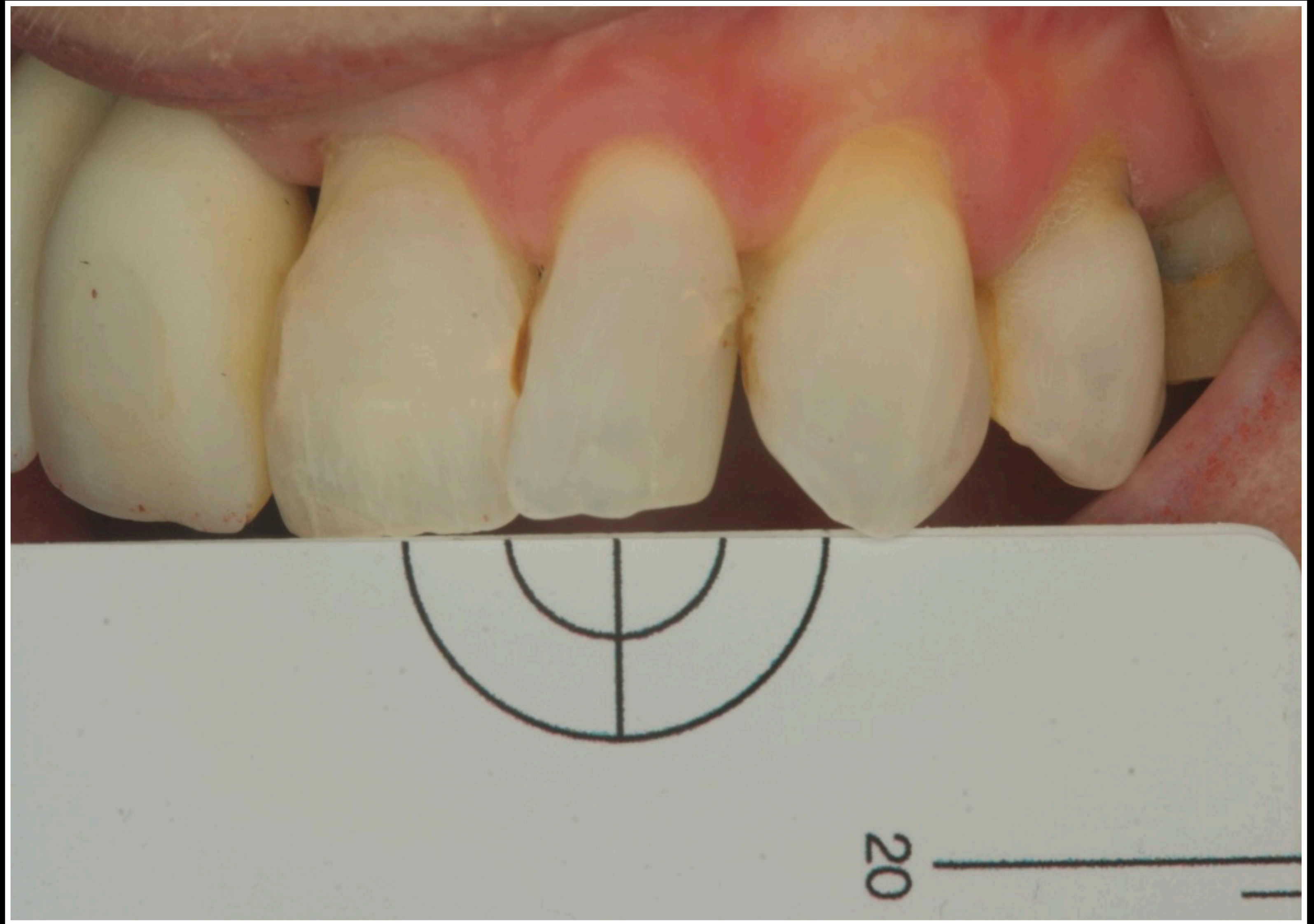
**Do the same with
both flashes
alternately**



**Shade Taking with
Card for eL.A.B. or
Mattise protocol**

**Grey Card positioned
directly under target
booths incisal edge
asper shade tab.
Same planets tooth
and camera must
also be on the same
plane.**

Image MUST BE RAW



**Shade Taking Individual
Ceramic Tab images
Depending on ceramic
system can be extremely
complicated**



**Shade Taking
Incorrect Images.
Bad Smart phone images
Shade tabs in wrong
position**

